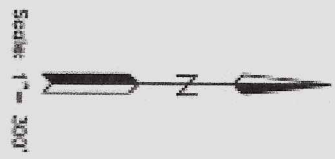
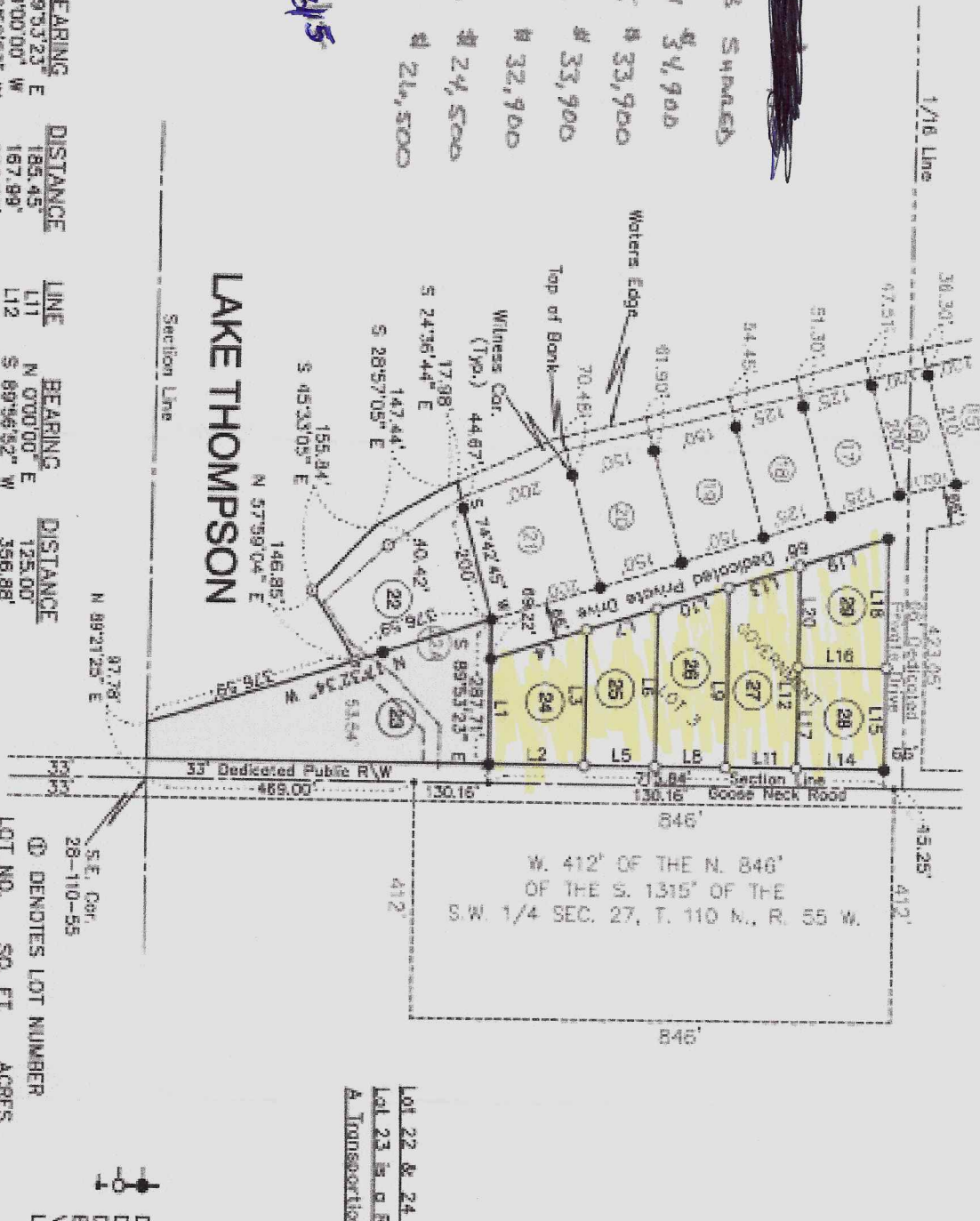


VANTAGE POINT DEVELOPMENT LOTS 22 THRU. 29 - SECOND ADDITION

THE VACATED PLAT OF VANTAGE POINT DEVELOPMENT - LOT 22A, AND A PART OF THE GOVERNMENT LOT 3, IN THE SOUTHEAST 1/4 OF SECTION 28, TWP. 110 NORTH, RGE. 55 WEST OF THE 5TH P.M., KINGSBURY COUNTY, SOUTH DAKOTA



S.E. 1/4 SEC. 28, T. 110 N., R. 55 W



LINE	BEARING	DISTANCE
L1	S 89°53'23" E	185.45'
L2	N 0°00'00" W	167.89'
L3	S 89°56'53" W	238.37'
L4	S 17°32'34" E	173.58'
L5	N 0°00'00" E	125.00'
L6	S 89°56'53" W	277.87'
L7	S 17°32'34" E	131.06'
L8	N 0°00'00" E	125.00'
L9	S 89°56'52" W	317.39'
L10	S 17°32'34" E	131.06'

LINE	BEARING	DISTANCE
L11	N 0°00'00" E	125.00'
L12	S 89°56'52" W	356.86'
L13	S 17°32'34" E	131.06'
L14	N 0°00'00" E	155.00'
L15	S 89°56'52" W	178.75'
L16	S 0°00'00" E	155.00'
L17	N 89°56'52" E	178.75'
L18	S 89°56'52" W	227.11'
L19	S 17°32'34" E	162.51'
L20	N 89°56'52" E	178.13'

LOT NO.	SQ. FT.	ACRES
22	58,406	1.34
23	95,890	2.20
24	35,536	0.82
25	32,265	0.74
26	37,203	0.85
27	42,141	0.97
28	27,706	0.64
29	31,406	0.72

 DENOTES IRON MONUMENT RECOVERED
 DENOTES STEEL SPIKE SET
 BEARINGS TAKEN FROM PLAT OF VANTAGE POINT DEVELOPMENT
 LOTS 1 THRU. 22

PIERCE & HARRIS ENGINEERING CO. INC.
 MASONIC BLDG. HURON, S.D.

Lot 22 & 24 - 29 are Residential Lots.
 Lot 23 is a Rural Transitional Lot &
 A Transportation Access Easement to Lot 22

Handwritten note: 2 1/2 10/18/21/5